

Municipal Infrastructure Support - Technical capacity towards sustained accelerated municipal infrastructure and service delivery

CESA Infrastructure Indaba

Presenter : Themba Dladla

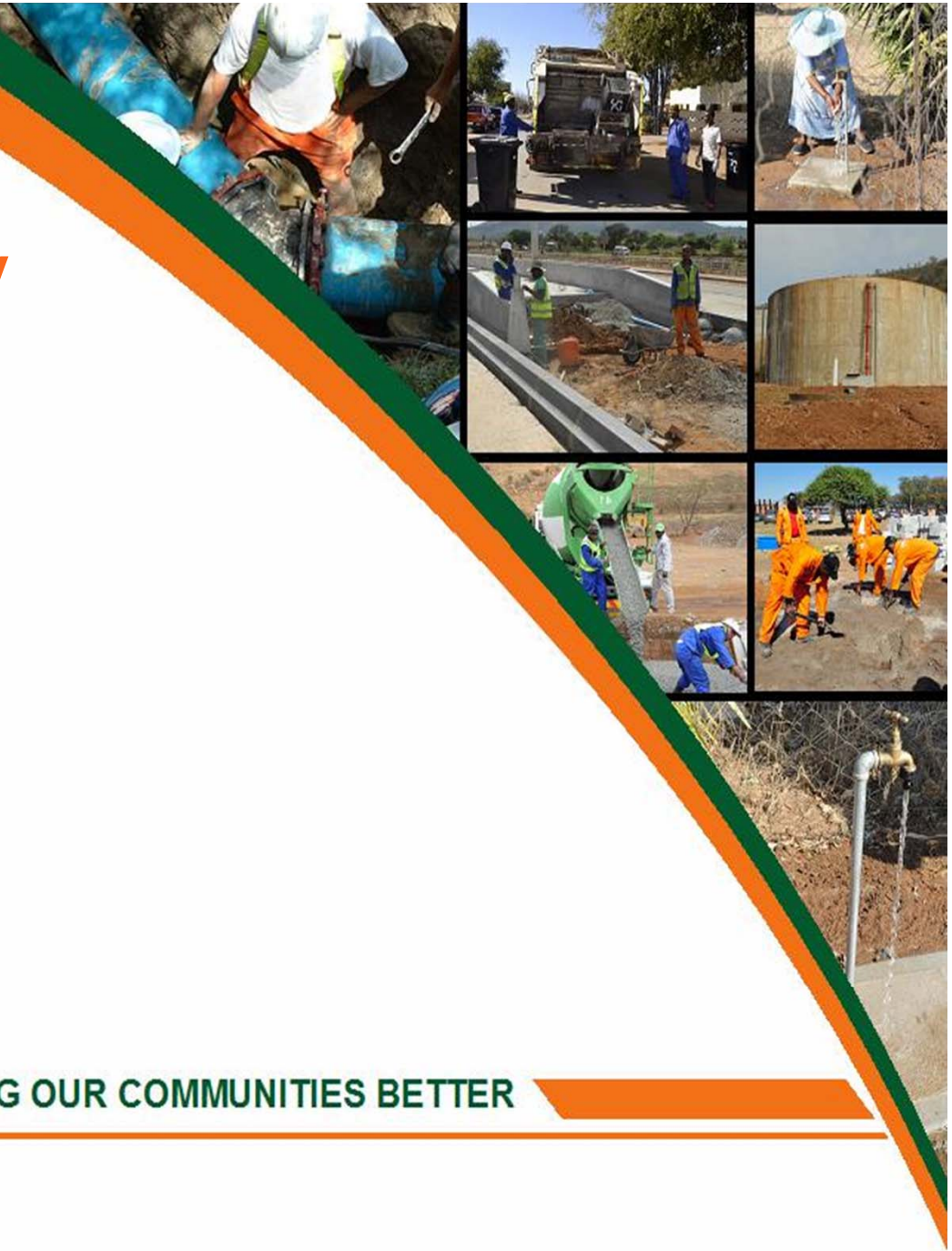
Programme Manager :

5 March 2018

BACK TO BASICS : SERVING OUR COMMUNITIES BETTER



cooperative governance
Department:
Cooperative Governance
REPUBLIC OF SOUTH AFRICA



Presentation Outline

1. Background to the Establishment of MISA
2. MISA Mandate and its Functions
3. Broad Operational Approach
4. Municipal Technical Support Model
5. MISA Focus Areas of Support
6. MISA Capacity Building Framework
7. MIG Expenditure Overview
8. Ultimate Goal of MISA Support to Municipalities

Background to the Establishment of MISA

- MISA was established in May 2012 as a Government Component under the Executive Authority for Cooperative Governance and Traditional Affairs.
- It is a Schedule 3 entity established by Presidential Proclamation 29 of 2012 issued in terms of section 7(5)(c) of the Public Service Act of 1994.
- Its establishment emanated from a feasibility study on the establishment of a **Special Purpose Vehicle** for supporting local government on municipal infrastructure provision.
- Upon establishment, MISA inherited the technical capacity support part of Siyenza Manje Programme from DBSA.
- An organisational structure for MISA was approved by DPISA during the establishment phase, which has since been revised.

MISA Mandate

Render technical advice & support to municipalities to optimise infrastructure provisioning

Support & strengthen municipal capacity to provide basic services, exercise powers & perform infrastructure related functions

- MISA, through its internal capacity and support from professional service providers, has a responsibility to build technical capacity of municipalities.
- MISA is mandated to build municipal capacity to plan, deliver, operate and maintain infrastructure
- Strategic inputs, in the form of engineering solutions, to improve infrastructure planning, delivery, operation and maintenance need to be developed and implemented by technical experts (including consulting engineers)
- What engineering solutions is CESA proposing towards improving municipal infrastructure planning, delivery, operation and maintenance?

Functions of MISA

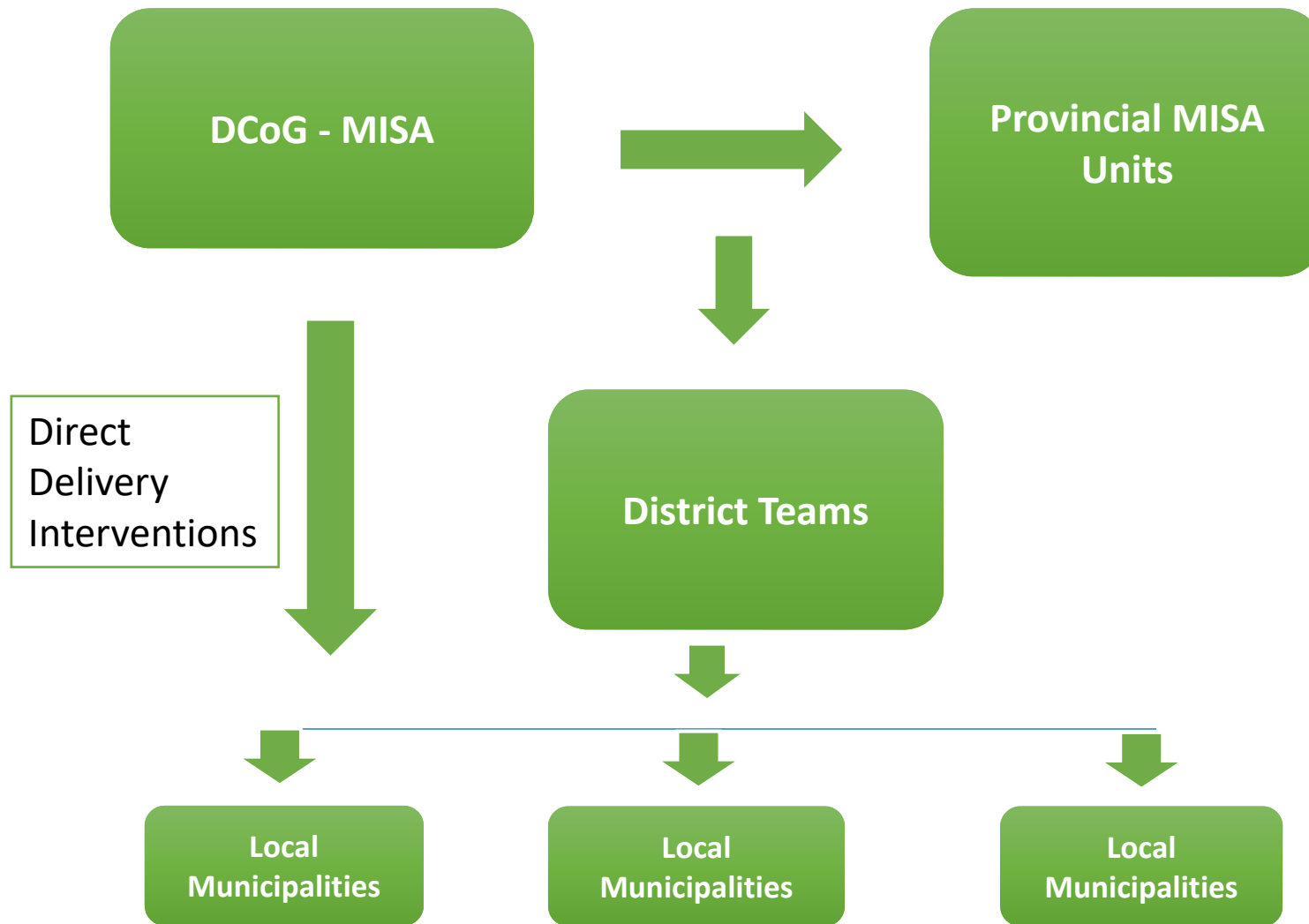
In terms of the Operational Notice gazetted on 5 July 2013, MISA is required to support and strengthen the capacity of municipalities by performing the following functions:

- *Supporting municipalities to conduct **sustainable infrastructure planning** for sustainable service delivery;*
- *Supporting and assisting municipalities with the **implementation of infrastructure projects** as determined through the Municipal IDP;*
- *Supporting and assisting municipalities with the **operations and maintenance of municipal infrastructure**;*
- ***Building the capacity** of municipalities to undertake effective planning, delivery, as well as operations and maintenance of municipal infrastructure.*
- *Any functions considered to be ancillary to those listed above.*

Broad Operational Approach

- The provision of technical support to municipalities is mainly through **gap-filling and pairing support** technical consultants assigned to support selected municipalities.
- A **district-wide model** is followed in the deployment of engineers – this model involves the deployment of **a multi-disciplinary team** in a particular District to support identified municipalities.
- An **assessment** is conducted on priority Districts to determine the required support.
- A **Memorandum of Agreement** as well as a **technical support plan** are signed with each municipality prior to the commencement of support.

Municipal Technical Support Model



MISA Focus Areas of Support - Engineering

1. Project Management Support to fast track MIG expenditure
2. Basic Water & Sanitation Services Support
3. Bulk Water Supply – Planning & Construction of Regional Water Scheme
4. Exploration and development of boreholes for water extraction
5. Maintenance and refurbishment of water purification works
6. Revamping of ageing infrastructure
7. Implementation of INEP
8. Infrastructure Operation & Maintenance Support
9. Infrastructure Asset Registers

MISA Focus Areas of Support – Planning

The following planning support is currently provided to various municipalities in nine (9) provinces through MISA Planners and Professional Service Providers (PSPs).

1. Infrastructure Master Plans (water, sanitation, energy, solid waste and roads & storm water) to ensure sustainable infrastructure development
2. Spatial Development Framework Reviews
3. Water Conservation and Water Demand Management
4. Land-use Management Systems
5. Operations and Maintenance Plans
6. By-laws (Technical and Town Planning)

Technical Skills Support

- **Artisans Development** – structured training for apprentices in technical disciplines towards qualifying as Artisans.
- **Young Graduates Programme** – workplace training for qualified graduates towards registration with relevant professional bodies.
- **Experiential Learners** – workplace training to enable learners to acquire workplace experience and/or complete the practical requirements for their qualifications.
- **Technical Training for Municipal Officials** – short course training for municipal officials in various aspects of infrastructure delivery.
- **Artisan Recognition of Prior Learning (ARPL)** – structured training for municipal officials with relevant experience towards undertaking trade tests to qualify as artisans.
- **Artisans Placement** – placement of qualified artisans and water process controllers in municipalities to enhance municipalities' capacity for operations and maintenance.

MISA Capacity Building Framework

- MISA is currently engaging stakeholders as part of a process of developing a **Capacity Building Framework** towards municipalities.
- The framework seeks to provide a guide on **HOW** MISA and other capacity building stakeholders in the municipal space should build technical capacity in municipalities.
- The stakeholder engagement sessions provide a platform to be utilised by, amongst others, CESA to influence MISA on the type of programmes or interventions that should be considered in building capacity.
- MISA is also working with identified municipalities to develop and implement municipal **Capacity Development Plans**
- Experienced engineers will, undoubtedly, be required to assist both MISA and municipalities in closing identified capacity gaps

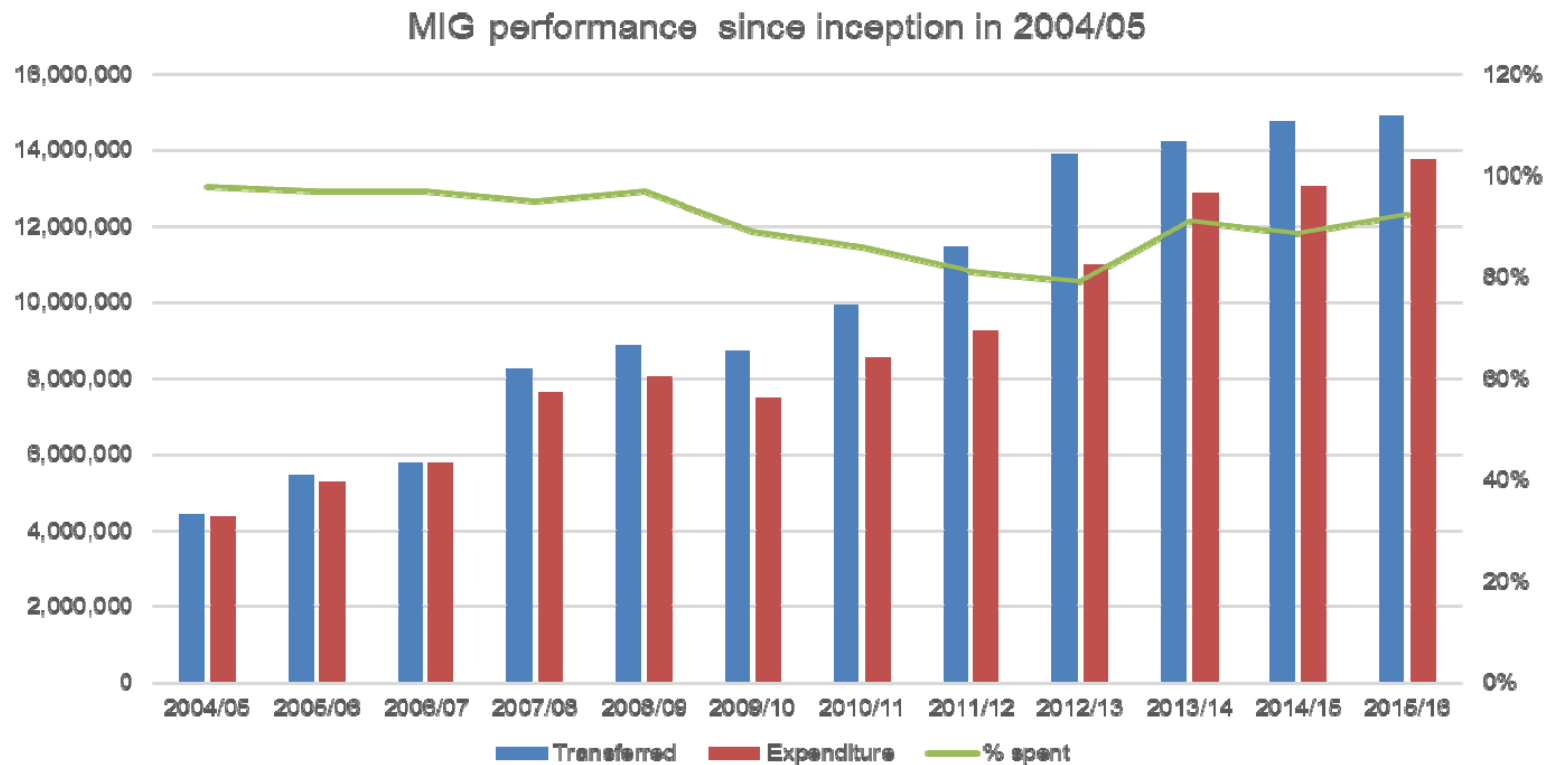
Technical Training for Municipal Officials

- MISA offers technical training **short courses** to municipal officials
- This is an opportunity for consulting engineers to develop and offer relevant and impactful training courses
- MISA relies on consulting engineers and other experienced engineers to develop and offer the courses
- Almost a thousand municipal officials are trained through this arrangement on an annual basis.
- CESA members are invited to actively participate in this initiative

Coaching and Mentoring of Young Graduates

- In an attempt to professionalise local government, MISA recruits young graduates and facilitates for them to receive coaching and mentoring towards registering as professionals
- MISA relies on available resources in the engineering sector to provide the needed support to the Yong Graduates.
- CESA is also invited to participate in this initiative

MIG Expenditure Performance over 10 Years Since Inception in 2004/05



Source : DCoG Report on MIG Programme : 2016

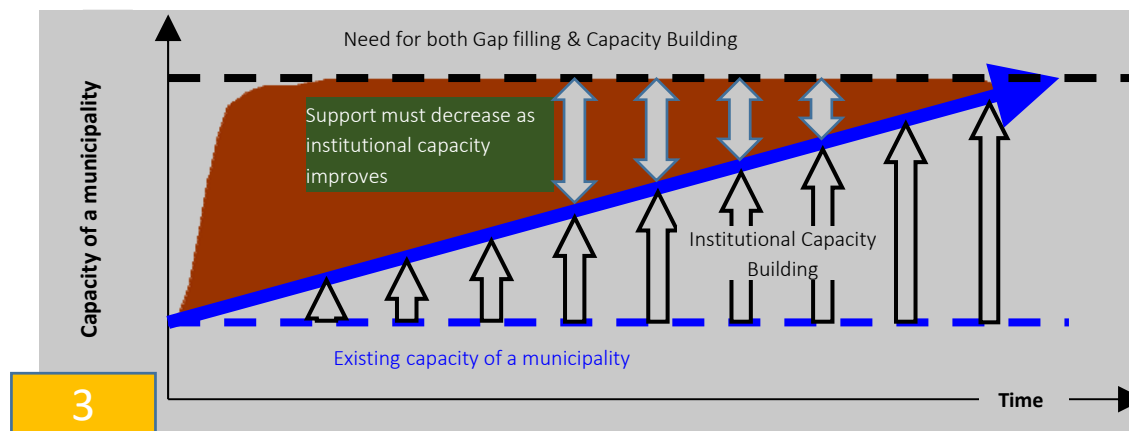
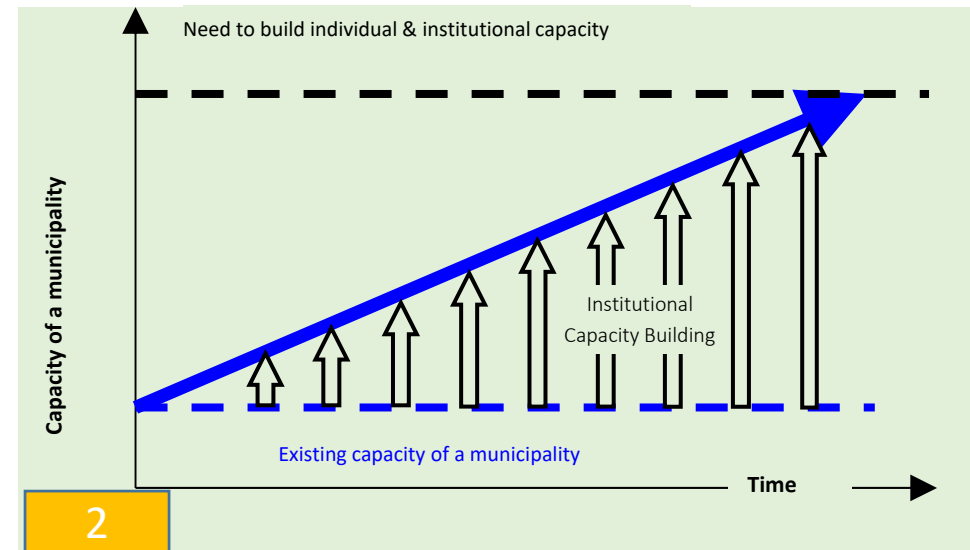
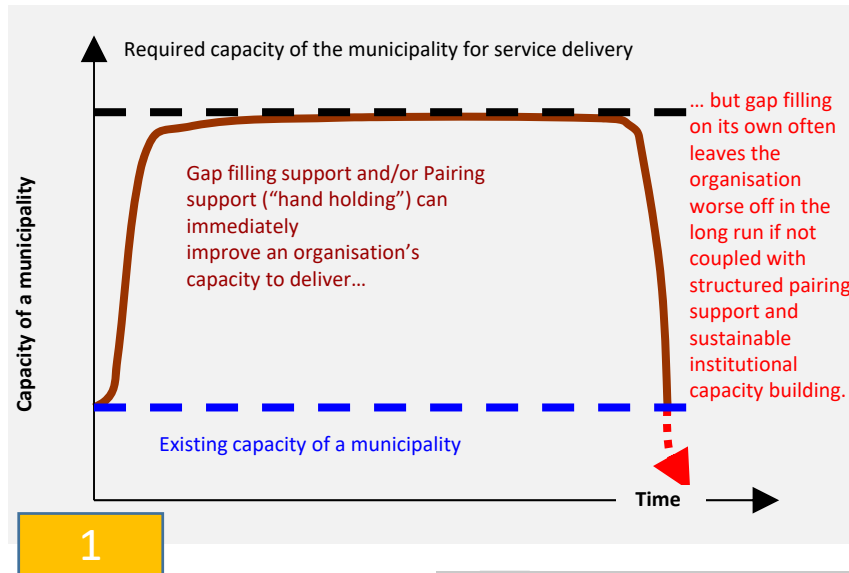
MIG Expenditure 10 Year Overview Since Inception in 2004/05

Financial Year	Transferred	Expenditure	% spent	Unspent funds
2004/05	4,439,942	4,368,489	98%	71,453
2005/06	5,436,161	5,251,226	97%	184,935
2006/07	5,761,834	5,753,988	97%	7,846
2007/08	8,261,788	7,639,330	95%	622,458
2008/09	8,884,714	8,036,899	97%	847,815
2009/10	8,735,186	7,471,799	89%	1,263,387
2010/11	9,924,806	8,539,296	86%	1,385,510
2011/12	11,443,490	9,248,418	81%	2,195,072
2012/13	13,884,178	10,969,888	79%	2,914,290
2013/14	14,224,447	12,880,499	91%	1,343,948
2014/15	14,745,475	13,067,319	89%	1,678,156
2015/16	14,887,917	13,744,274	92%	1,143,643
Total	120,629,938	106,971,425	89%	13,658,513

Source : DCoG Report on MIG Programme : 2016

**3% Increase from
2014/15**

Ultimate Goal of MISA Support to Municipalities



Thank You!

BACK TO BASICS : SERVING OUR COMMUNITIES BETTER



cooperative governance
Department:
Cooperative Governance
REPUBLIC OF SOUTH AFRICA

